

CASE STUDY

WEST FORK KENNEY'S RUN

Creek Channel Repair - Golden, CO



Location: Golden, CO

Year Constructed: 2016

Application Type: Channel Lining

Project Size: 1800 Units

Client: Urban Drainage & Flood Control

Reinforcement: Mattress Style

Vegetation: Hydroseed

Engineer: Icon Engineering

Contractor: Naranjo Civil Constructors

+Project Snapshot

Envirolok was used to create a meandering stream to carry the normal water flow and to seal the 300'x40' floodplain area. This allowed heavy storm water events to pass without building up sediment from eroded banks and the muddy creek bottom.



Designed with Nature, Engineered for Life

Shoreline Protection | Slope Stabilization | Stormwater Management
Erosion Control | River / Streambank Restoration | Retaining Walls



+Installation Method:

The base of the normal flow channel was sealed with a layer of Envirolok bags. The sides of the meandering stream were reinforced with a 2-3' high stack of bags locked in place with Envirolok spikes. The remaining floodplain was sealed by laying Envirolok bags flat and tight which sealed the sediment and allowed the plants to grow into the bags.

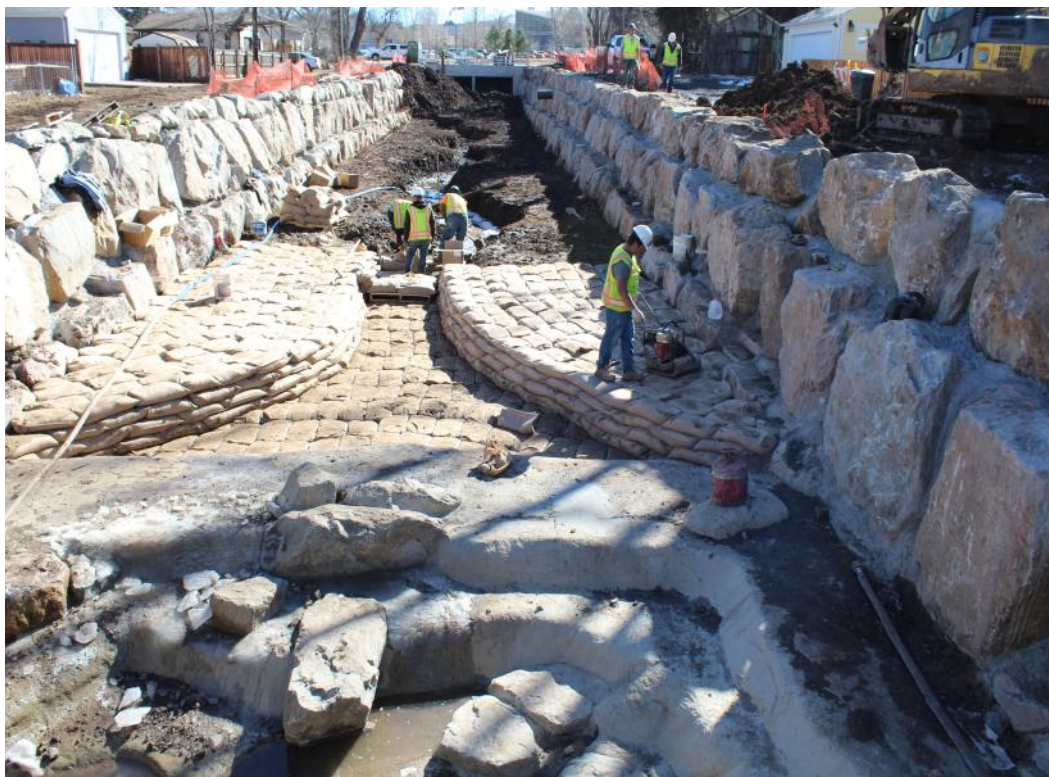


+Vegetation Approach:

The Envirolok portion of the project was hydroseeded with native plants and grasses which provided vegetation in just a few short weeks.

+Results

The project Envirolok's system provided a solution to handle large storm events, limit sedimentation, and create a new focal feature for the residential neighborhood. has vegetated well and maintained the desired form shape after going through a full season of snow, runoff, and warm summer weather. Plants and grasses are continuing to grow making the installation stronger and natural in appearance. After a full season there is no evidence of sediment in the channel and the cobble in still visible in the normal flow channel.



Designed with Nature, Engineered for Life

10101 N. Casey Road
Evansville, WI 53536
www.envirolok.com

(P) 608.226.2565
(F) 608.88.4640
ecosolutions@envirolok.com